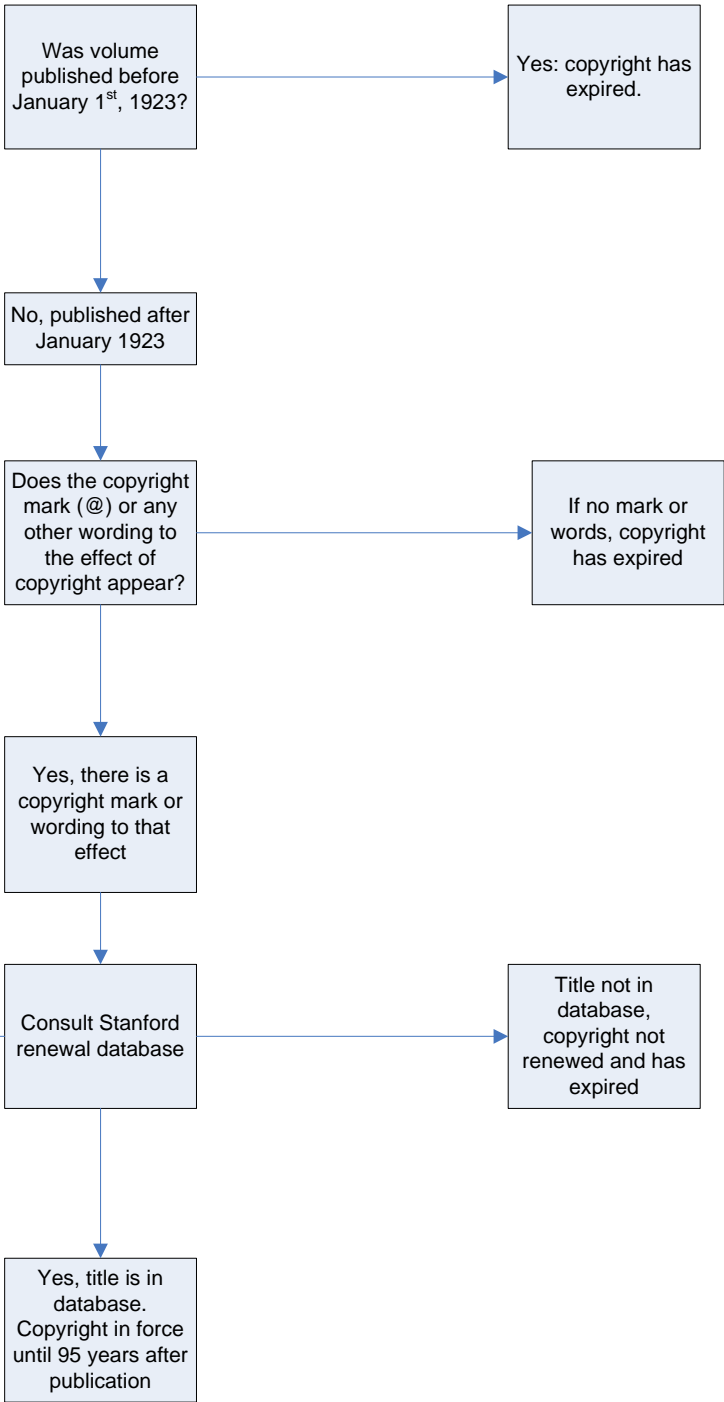


Copyright flowchart for
Brittle Book Program (BBP)
Level One
v.1

- Assumptions:
- If volume is in BBP, it is considered published
 - Given nature of brittle books, few if any materials published after 1963 will fall into BBP
 - This guide covers materials published in all countries



<http://collections.stanford.edu/copyrightrenewals/bin/page?forward=home>